

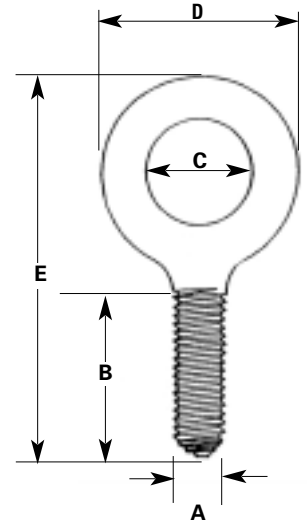


WIRE ROPE FITTINGS

PLAIN PATTERN EYEBOLTS - ALL THREAD FORGED - CARBON STEEL - SELF COLORED

• Heat treated for strength and desired properties.

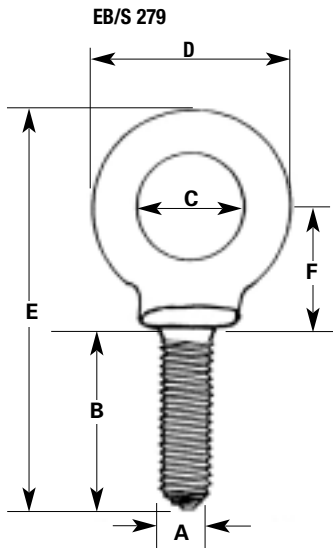
THREAD SIZE UNC- 2A A	DIMENSIONS IN INCHES				WORKING LOAD LIMIT* (lbs.)	WEIGHT lbs. EACH
	SHANK LENGTH B	I.D. EYE C	O.D. EYE D	OVERALL LENGTH E		
1/4 - 20	1	3/4	1 3/16	2 3/8	500	.05
5/16 - 18	1 1/8	7/8	1 7/16	2 13/16	900	.10
3/8 - 16	1 1/4	1	1 11/16	3 1/4	1,300	.16
7/16 - 14	1 3/8	1 1/16	1 13/16	3 9/16	1,800	.24
1/2 - 13	1 1/2	1 3/16	2 1/8	3 21/32	2,400	.34
9/16 - 12	1 3/4	1 3/8	2 9/16	4 3/4	3,200	.47
5/8 - 11	1 3/4	1 3/8	2 9/16	4 3/4	4,000	.67
3/4 - 10	2	1 1/2	2 13/16	5 1/4	6,000	1.00
7/8 - 9	2 1/4	1 5/8	3 3/16	6	7,000	1.63
1 - 8	2 1/2	1 3/4	3 9/16	6 5/8	9,000	2.22
1 1/8 - 7	2 3/4	2	4 1/16	7 17/32	12,000	3.40
1 1/4 - 7	3	2 3/16	4 7/16	8 7/32	15,000	4.44
1 1/2 - 6	3 1/2	2 1/2	5 3/16	9 15/32	21,000	7.36
1 3/4 - 5	3 3/4	2 7/8	6	10 13/16	28,000	11.35
2 - 4 1/2	4	3 1/4	6 7/8	11 7/8	38,000	16.70
2 1/2 - 4	5	4	8 1/2	13 5/8	56,000	29.00



***WARNING** : Never exceed working load limit.
W.L.L. are based on vertical loading.

Blanks available
Metric ISO Threads available on request

SHOULDER PATTERN - ALL THREAD FORGED - CARBON STEEL - SELF COLORED



THREAD SIZE UNC- 2A A	DIMENSIONS IN INCHES				WORKING LOAD LIMIT* (lbs.)	WEIGHT lbs. EACH
	SHANK LENGTH B	I.D. EYE C	O.D. EYE D	OVERALL LENGTH E		
1/4 - 20	1	3/4	1 3/16	2 3/8	650	.05
5/16 - 18	1 1/8	7/8	1 7/16	2 13/16	1,200	.10
3/8 - 16	1 1/4	1	1 11/16	3 1/4	1,550	.16
7/16 - 14	1 3/8	1 1/16	1 13/16	3 9/16	1,800	.24
1/2 - 13	1 1/2	1 3/16	2 1/8	3 21/32	2,600	.34
9/16 - 12	1 3/4	1 3/8	2 9/16	4 3/4	3,200	.47
5/8 - 11	1 3/4	1 3/8	2 9/16	4 3/4	5,200	.67
3/4 - 10	2	1 1/2	2 13/16	5 1/4	7,200	1.00
7/8 - 9	2 1/4	1 5/8	3 3/16	6	10,600	1.63
1 - 8	2 1/2	1 3/4	3 9/16	6 5/8	13,300	2.22
1 1/8 - 7	2 3/4	2	4 1/16	7 17/32	12,000	3.40
1 1/4 - 7	3	2 3/16	4 7/16	8 7/32	21,000	4.44
1 1/2 - 6	3 1/2	2 1/2	5 3/16	9 15/32	24,000	7.36
1 3/4 - 5	3 3/4	2 7/8	6	10 13/16	28,000	11.35
2 - 4 1/2	4	3 1/4	6 7/8	11 7/8	38,000	16.70

***WARNING** : Never exceed working load limit.
W.L.L. are based on vertical loading.
Design Factor: 5:1